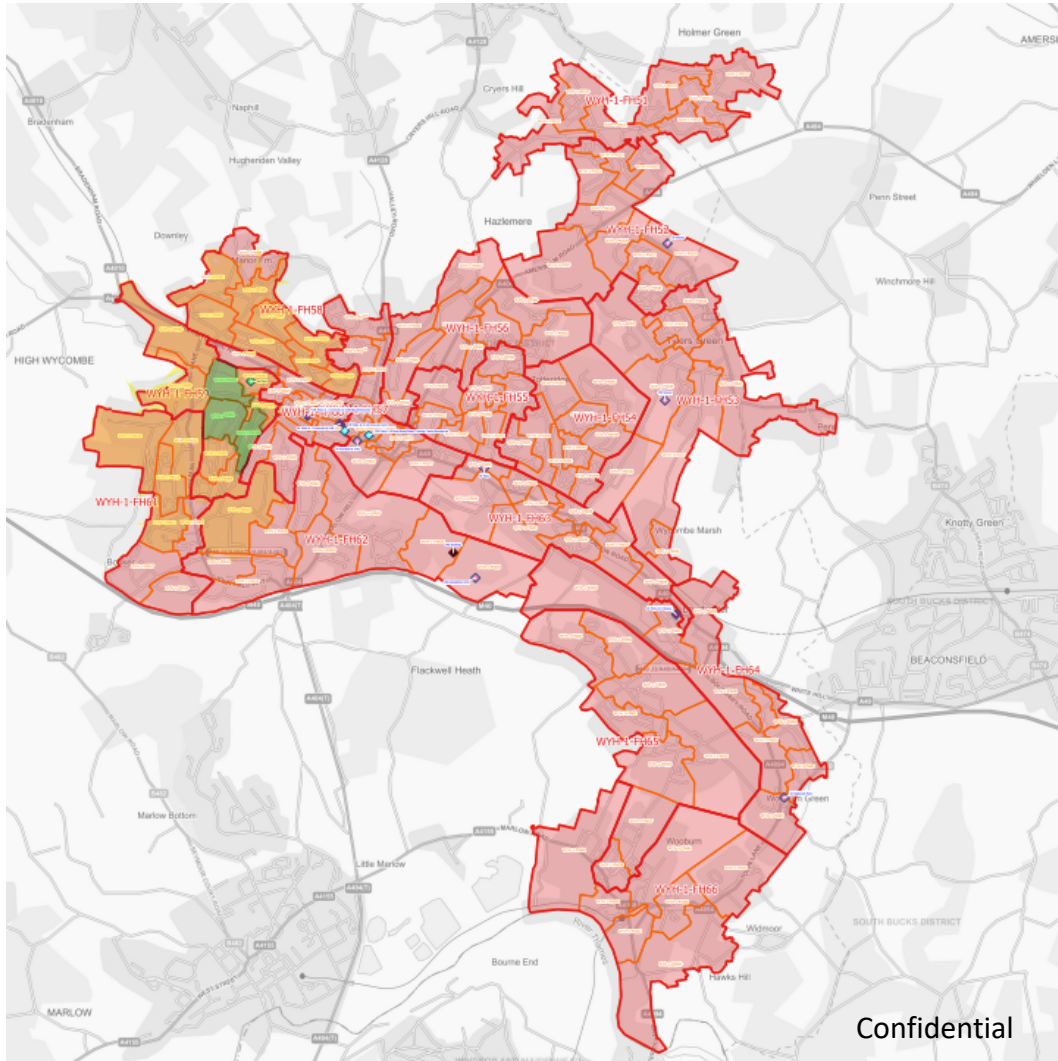


CityFibre's High Wycombe Project

Neil Madle – Area Manager
Lisa Chinn – City Build
Manager



HIGH WYCOMBE SUMMARY



Green – complete
Yellow – in progress
Red – not started

- Investment £23m
- Homes approx. 47,000
- Businesses & Public Sector can also be served
- Single FEX – Mill End Road
- CityFibre city build team being mobilised, led by build manager Lisa Chinn
- Build Partner is Instalcom
- Build start date July 2022
- First homes live for service by end 2022 – multiple ISPs
- 2/3 year build
- Crew levels and permits being discussed with Highways
- Social housing & HA wayleaves needed to ensure inclusion

Construction process – street by street

The construction process outside each home typically takes 1-2 days



1. Setting up site

Most work takes place in the pavement, not the road itself. Dig site barriers ensure safety.



2. Laying the ducts

Our construction team dig narrow trenches to hold the protective ducting through which the fibre cables run. Trenches pass driveway entrances – but they are covered until the work is done to allow cars across.

As each property is passed, a small connection box (about the size of a mobile phone) is built into the pavement. When a resident takes a service, fibre is simply extended from the connection box into the home.



3. Reinstating the pavement

After duct installation, we reinstate pavement surfaces and leave the street as we found it by replacing paving slabs or covering with tarmac to match. New tarmac may appear darker in colour but fades over time.



4. Full-fibre installation

When the construction work in each street is completed, our engineers feed the fibre through the duct to the nearest fibre cabinet. This connects the street to the wider network and brings gigabit broadband within reach of each home. This bit is quick and unlikely to cause further disturbance or inconvenience for residents.



5. The street is Gigabit ready!

With the street connected to one of the fastest full fibre networks in the world, residents are then able to access the brand new gigabit-capable broadband services from our ISP partners

Resident and Construction Communication

1. **Project introduction – door knock**
(2-4 weeks before build start)
2. **Build notice letter**
(2-7 days before build start)
3. **Parking notices**
(48 hours before build start)
4. **Site branding**
(during build)
5. **Wider community engagement**
(ongoing)

Full fibre is coming

Millions of homes in London are set to be transformed into full fibre homes. This means you'll be able to enjoy the benefits of full fibre broadband. The network will provide lightning fast speeds, consistent performance and reliability - from your laptop or phone to your TV, tablet, smart home appliances and more.

When working on your property, you'll be able to enjoy the benefits of full fibre broadband. The network will provide lightning fast speeds, consistent performance and reliability - from your laptop or phone to your TV, tablet, smart home appliances and more.

What does this mean for me?

Access gigabit speed broadband that's 1000 Megabits per second!

Stream Ultra HD and 4K TV in multiple rooms at the same time.

Say goodbye to the dreaded buffer symbol, even in evenings when everyone is online.

Fully embrace the exciting new smart home technologies from Amazon Alexa to smart heating, lighting and security systems.

Stay close to family and friends with buffer free and crystal clear video calling.

Work from home with seamless file sharing and video conferencing.

We're on our way!

It's time to get ready for your street to be part of the new full fibre network. This will involve some work on the ground, including laying cables, so some roads may be closed for a few days to complete the work. We'll have our teams on site to help you with any questions and to ensure the work is completed as quickly as possible.

What is full fibre?

The majority of homes in London are currently served by fibre to the cabinet (FTTC) broadband. This means that the fibre optic cables only reach the street cabinet, and then travel to your home via copper wires. Full fibre broadband means that the fibre optic cables reach your home, providing faster speeds and more reliability. This means you can enjoy the benefits of full fibre broadband, such as gigabit speed broadband, streaming Ultra HD and 4K TV in multiple rooms at the same time, and more.

The digital revolution is coming to your doorstep

Need access to your property? Speak with our team, they're happy to help.

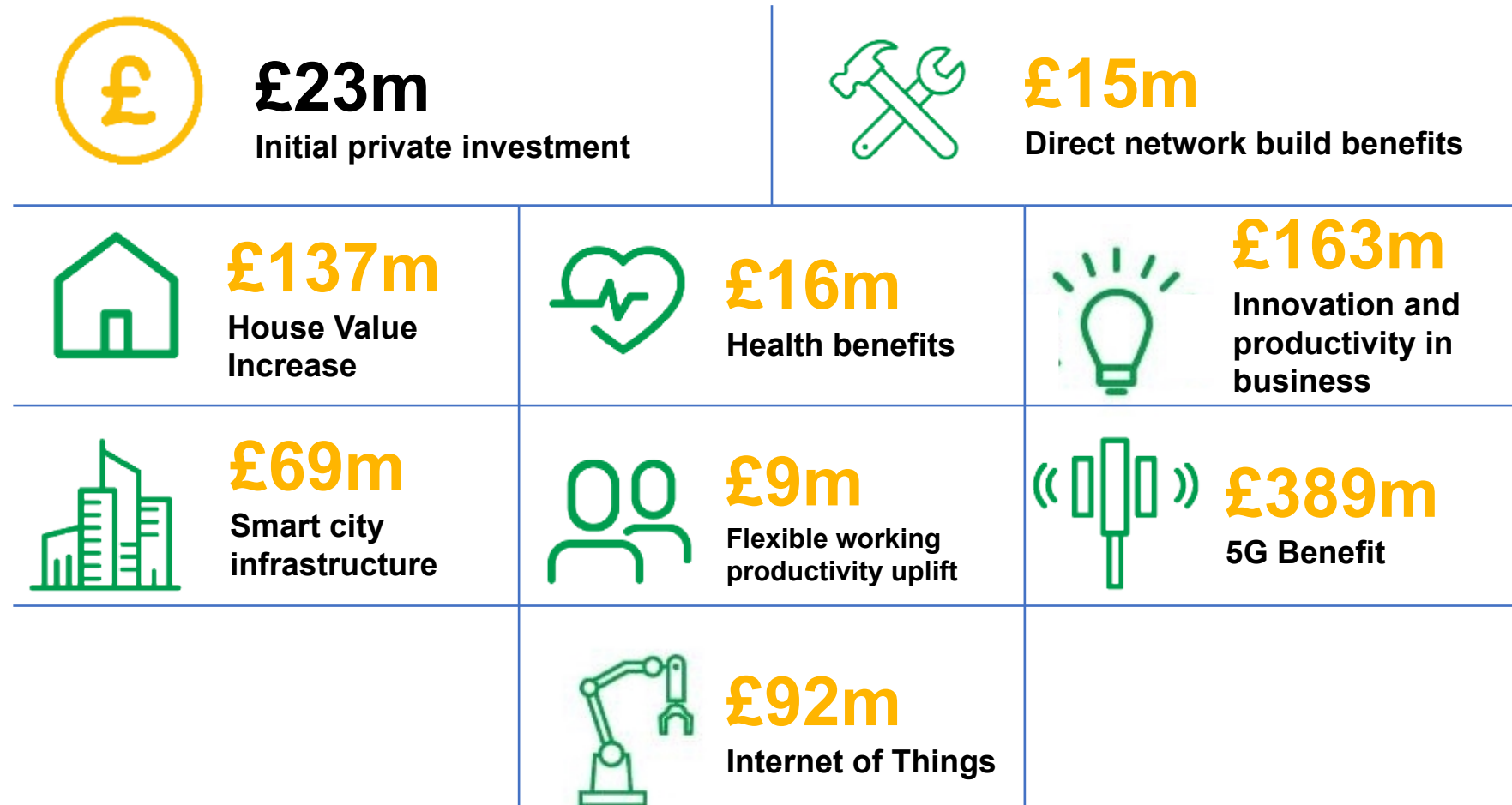
Internet services will be available from Vodafone - to find out more visit vodafone.co.uk/gigafast

Benefits of full fibre

Our full fibre network will enable local residents to:

CityFibre

Our 15-year impact on the local economy



Hatch report: *'The Economic Impact of Full Fibre Infrastructure from CityFibre's Network'*



Buckinghamshire Council's Role in High Wycombe Development



Our Roles and Responsibilities

The council play a key part in enabling Cityfibre to roll out their deployment in and around High Wycombe. The below list details these areas of support:

- a) Monthly calls with Highways and Streetworks to discuss build plans, supplier performance and to help shape future development
- b) Using data gathered from other suppliers and central government to ensure Cityfibre are working in areas where other suppliers aren't
- c) Ongoing dialogue to minimise disruption to residents
- d) Supporting growth in High Wycombe by assisting Cityfibre to maximise rollout to as many premises as possible